

**SURREY AND BORDERS PARTNERSHIP NHS
FOUNDATION TRUST**

STATEMENT OF PURPOSE

Service Provider

Surrey and Borders Partnership NHS Foundation Trust

Surrey and Borders Partnership NHS Foundation Trust provides health and social care services for people of all ages with mental health problems, drug and alcohol problems and learning disabilities in Surrey and North East Hampshire. We also provide some specific services across our borders, particularly in Croydon and Hampshire.

We were established as a health and social care Partnership Trust in April 2005 and became an NHS Foundation Trust in May 2008 - the first mental health and learning disability Trust in the South East Coast NHS Region to gain this special status.

We seek to involve and engage people who use our services and our community and we have more than 5,000 public members as well as our 2,300+ staff who together elect our Council of Governors. Our Vision and Values represent our shared ambitions for the success of the Trust.

1. The aims and objectives of the service provider in carrying on the regulated activity.

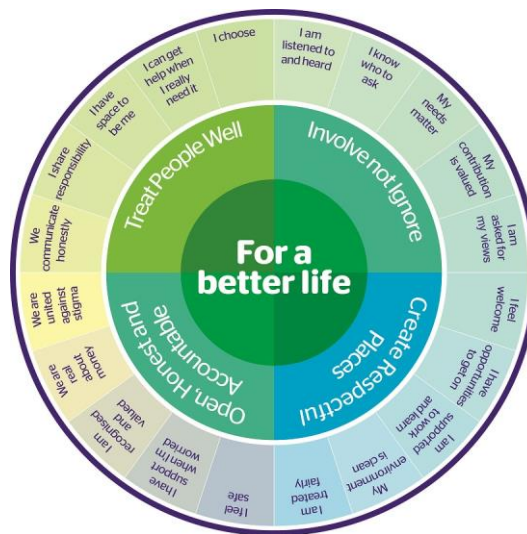
Our Mission and Purpose

Our core purpose reflects our role as both a provider of services and a leader in promoting good health and social inclusion:

“To deliver excellent and responsive assessment, treatment and care, focused on the needs and contributions of the individual; and to lead our communities in challenging stigma and developing their role in improving the mental health and wellbeing of people living within our communities.”

Our Vision and Values

Our Vision and Values underpin how we work across all our regulated activities.



They were created as a result of a series of conversations which were held in 2005 to consider the ways in which we should be working. Participants in these conversations numbered in excess of 600 and included staff, people who use services, their carers and families, County Council social care staff, local voluntary groups, Primary Care Trusts, our regulators and independent and private providers of services.

The statements around these headings are quotes from the conversations where people described what they would like their experience of the Trust to be. The Trust Board and

Executive Team are committed to ensuring that our Vision and Values guide how we work and how we make our decisions. We are actively using them to test how well we are performing and we will be using them increasingly as a basis for seeking the views of staff, people who use services and carers on how we are doing.

Our regulated activities are

1. Treatment of disease, disorder or injury

This includes the majority of our healthcare services including our hospital and community teams for people of all ages with mental ill-health and learning disabilities.

2. Assessment of medical treatment for persons detained under mental health act

This includes our hospital and rehabilitation services for people with mental ill-health and some of our active support and treatment services for people with learning disabilities.

3. Personal care (because of supported living needing to be included)

This includes our supported living services for people with learning disabilities.

4. Accommodation for persons who require nursing or personal care

This includes some learning disability services, our short break services for people with learning disabilities and also our Crisis House for people with mental ill-health.

5. Diagnostic and screening procedures

This includes all services where we take bloods and or take blood pressures.

6. Nursing care

This includes the majority of our healthcare services including our hospital and community teams for people of all ages with mental ill-health and some of our learning disabilities services.

Our Service Model

Our service model is based on the following key features:

- Whole systems approach to delivering health and social care support
- Optimising strategic partnerships
- Person centred approaches to enable choice
- Mainstreaming – ensuring access for all
- Integration – creating virtual health and social care teams
- Changing professional roles

Our focus is on early intervention, prevention and the well being of our population.

To achieve the key principles of the service model we have moved away from traditional images and delivery created by the “care group labels”, to describing services in a non discriminatory way and in a style that facilitates integration:

Health Care

- **Community Teams** – our core network of dedicated multi-disciplinary teams supporting people with mental ill-health and learning disabilities across Surrey and North East Hampshire including providing Early Intervention, , Children and Younger Persons Mental Health services and ongoing support for people with long term conditions
- **Specialist Community Services** – our range of specialist services, delivered through a network of community teams or on an outpatient or day care basis, depending on the service, for people who require the expertise of our drug and alcohol (including subcontracts with Cranston for Pavilions in Brighton and iHear in Hounslow), eating disorders and forensic (including prison social care for assessments and personal social care to meet need to people whilst based in Surrey prisons).
- **24 Hour Acute Assessment and Treatment** - our urgent and emergency care services providing 24 hour “acute” care and treatment to people with mental ill-health in our hospitals or through our Crisis Resolution and Home Treatment Teams in their own homes
- **Psychological Medicine** – our range of services which provide active care and treatment to people in need of specialist psychological therapies for neuro-developmental disorders, life-changing accident and illness and long term physical health conditions and our liaison services providing mental health expertise to people being cared for in neighboring general hospitals due to their physical ill-health
- **24 Hour Complex Active Treatment and Support** – our services providing long term support and treatment to people whose complex needs and challenging behaviour require 24 hour care in their own homes or in some of our own residential settings

Social Care

- **Individualised Support Programmes** – our social care services providing individual supported living programmes, including day activities, to allow people to continue to live as independently as possible in their own homes.

2. The kinds of services provided for the purposes of the carrying on of the regulated activity and the range of service users' needs which those services are intended to meet.

Service Type	Service User Needs
Hospital Services for people with mental health needs, learning disabilities and problems with substance misuse	Learning Disabilities or Autistic Spectrum Disorder Older People Younger Adults Mental Health Dementia People who are detained under the mental health People who misuse drug and alcohol
Rehabilitation services	Older People Younger Adults Mental Health People who are detained under the mental health
Community based services for people with mental health needs	Older People Younger Adults Children 0 – 3 years Children 4 – 12 years Children 13 – 18 years Mental Health Dementia People with an eating disorder
Community based services for people with learning disabilities	Learning Disabilities or Autistic Spectrum Disorder Older People Younger Adults Children 0 – 3 years Children 4 – 12 years Children 13 – 18 years
Community based services for people who misuse substances	Older People Younger People People who misuse drug and alcohol
Care home service without nursing	Learning Disabilities or Autistic Spectrum Disorder Older People Younger Adults
Care home service with nursing	Learning Disabilities or Autistic Spectrum Disorder Older People Younger Adults Children 4 – 12 years

	Children 13 – 18 years Mental Health
Domiciliary care services	Learning Disabilities or Autistic Spectrum Disorder Older People Younger Adults Mental Health
Supported Living services	Learning Disabilities or Autistic Spectrum Disorder Older People Younger Adults Mental Health

3. The full name of the service provider and of any registered manager, together with their business address, telephone number and, where available, electronic mail addresses.

Service provider - Surrey and Borders Partnership NHS Foundation Trust

Nominated Individual

Joanne Young, Director of Quality (Director of Nursing)

Address

Trust Headquarters
18 Mole Business Park
Randalls Road
Leatherhead
Surrey
KT22 7AD

Telephone Number: 01372 216008

E-mail: Jo.Young@sabp.nhs.uk

4. The legal status of the service provider.

Surrey and Borders Partnership NHS Foundation Trust was established in April 2005 and was authorised as Surrey and Borders Partnership NHS Foundation Trust in May 2008.

5. Details of the locations at which the services provided for the purposes of the regulated activity are carried on.

No.	Location
1.	April cottage, Farmfield , Charlwood, Surrey, RH6 0BN
2.	Ashmount, Hook Road, Epsom, Surrey, KT19 8QJ
3.	Beeches Bungalow, 3 Oak Road, Reigate, Surrey, RH2 0BP
4.	Brook House, 2 Brookfield Close, Ottershaw, Chertsey, KT16 0JL
5.	Courthill House, Court Hill, Chipstead, Surrey, CR5 3NQ
6.	Crisis House, Great Meadows, Redhill, Surrey, RH1 6JJ
7.	Derby House, Hook Road, Epsom, Surrey, KT19 8QJ
8.	Farnham Road Hospital (Mental health Unit) Farnham Road, Guildford, Surrey, GU2 7LX
9.	Hillcroft, St Ebbas, Hook Road, Epsom, Surrey, KT19 8QJ
10.	Jasmine at Primrose, Primrose 2, The Meadows, Horton Lane, Epsom, Surrey KT19 8PB
11.	Kingscroft Worple Road, Staines, Middlesex, TW18 1ED
12.	Larkfield, Farmfield , Charlwood, Surrey, RH6 0BN
13.	Loddon Alliance, Office S2/ S3 Vickers Business Centre Priestley Road, Basingstoke RG24 9NP.
14.	Margaret Laurie House Inpatient Rehabilitation Unit, 1 Church Road, Reigate, Surrey RH2 8HY
15.	Mid Surrey Assessment and treatment service, Epsom General Hospital, Dorking Road, Epsom, Surrey, KT18 7EG
16.	Oakwood, 13, Woodview Way, Caterham, Surrey CR35WP
17.	Redstone House, Kings Cross Lane, South Nutfield, Redhill, Surrey, RH1 5NY
18.	Rosewood, Farmfield, Charlwood Road, Charlwood, Surrey, RH6 0BG
19.	St Peters Site, Chertsey, Surrey, KT16 0QA
20.	The Shieling, St Ebbas, Hook Road, Epsom, Surrey, KT19 8QJ
21.	Trust Headquarters, 18 Mole Business Park, Leatherhead, Surrey, KT22 7AD
22.	West Park Epsom, Horton Lane, Epsom, Surrey KT19 8PB

Pledge

- (1) The registered person will give the Care Quality Commission this statement of purpose.
- (2) The registered person will keep under review and, where appropriate, revise the statement of purpose.
- (3) The registered person will provide written details of any revision to the statement of purpose to the Commission within 28 days of any such revision

Appendix 1

List of services

Service Profile	Service Group	Service Name
Adult Mental Health	Adult Acute A and T	Blake ward
Adult Mental Health	Adult Acute A and T	Delius Ward
Adult Mental Health	Adult Acute A and T	Elgar Ward
Adult Mental Health	Adult Acute A and T	Juniper Ward
Adult Mental Health	Adult Acute A and T	Magnolia Ward
Adult Mental Health	Adult Acute A and T	Mulberry Ward
Adult Mental Health	Adult Acute A and T	Acute Therapy Service *3
Adult Mental Health	Adult Behaviour Therapy	Behaviour Therapy North
Adult Mental Health	Adult CMHRS	Art Therapies * 2
Adult Mental Health	Adult CMHRS	Community Mental Health Recovery Service-Surrey Heath
Adult Mental Health	Adult CMHRS	Community Health Psychology
Adult Mental Health	Adult CMHRS	Community Mental Health Recovery Service-Elmbridge
Adult Mental Health	Adult CMHRS	Community Mental Health Recovery Service-Epsom
Adult Mental Health	Adult CMHRS	Community Mental Health Recovery Service-Guildford
Adult Mental Health	Adult CMHRS	Community Mental Health Recovery Service-Mole Valley
Adult Mental Health	Adult CMHRS	Community Mental Health Recovery Service-North East Hant
Adult Mental Health	Adult CMHRS	Community Mental Health Recovery Service-Reigate
Adult Mental Health	Adult CMHRS	Community Mental Health Recovery Service-Runnymede
Adult Mental Health	Adult CMHRS	Community Mental Health Recovery Service-Spelthorne
Adult Mental Health	Adult CMHRS	Community Mental Health Recovery Service-Tandridge
Adult Mental Health	Adult CMHRS	Community Mental Health Recovery Service-Waverley
Adult Mental Health	Adult CMHRS	Community Mental Health Recovery Service-Woking
Adult Mental Health	Adult CMHRS	Enabling Independence Service-East (Epsom)
Adult Mental Health	Adult CMHRS	Enabling Independence Service-West (Guildford)
Adult Mental Health	Adult CMHRS	Family Therapy * 2

Adult Mental Health	Adult CMHRS	Health Psychology-South West
Adult Mental Health	Adult CMHRS	Neuropsychology
Adult Mental Health	Adult CMHRS	Psychotherapy Services * 4
Adult Mental Health	Adult CMHRS	The Wellbeing Centre
Adult Mental Health	Adult CMHRS	Transition Service
Adult Mental Health	Adult Crisis	Crisis House and Crisis Line
Adult Mental Health	Adult Home Treatment Team	Home Treatment Team East Surrey
Adult Mental Health	Adult Home Treatment Team	Home Treatment Team-Mid Surrey
Adult Mental Health	Adult Home Treatment Team	Home Treatment Team-North West Surrey
Adult Mental Health	Adult Home Treatment Team	Home Treatment Team-South West Surrey
Adult Mental Health	Adult Home Treatment Team	Home Treatment Team-Surrey Heath and NE Hants
Adult Mental Health	Adult Crisis	Safe Havens * 3
Adult Mental Health	Adult Psychiatric Liaison	Criminal Justice Liaison and Diversion Service
Adult Mental Health	Adult Psychiatric Liaison	Liaison Service-East Surrey Hospital Psychiatric
Adult Mental Health	Adult Psychiatric Liaison	Liaison Service-Epsom General Hospital
Adult Mental Health	Adult Psychiatric Liaison	Liaison Service-Frimley Park Hospital Psychiatric
Adult Mental Health	Adult Psychiatric Liaison	Liaison Service-Royal Surrey County Psychiatric
Adult Mental Health	Adult Psychiatric Liaison	Liaison Service-St Peters Hospital Psychiatric
Adult Mental Health	Adult Rehabilitation	24 7 Margaret Laurie
Adult Mental Health	IAPT	Mind Matters Barnet (IAPT)
Adult Mental Health	IAPT	Mind Matters Surrey
Adult Mental Health	SS Psychology	Art Therapies * 2
Adult Mental Health	SS Psychology	Family Therapy * 2
Adult Mental Health	SS Psychology	Health Psychology-South West
Adult Mental Health	SS Psychology	Neuropsychology
Adult Mental Health	SS Psychology	Psychotherapy Services * 4
Children and Young People Services	CYPS CAMHS CT	Child and Adolescent Mental Health Services Community Team East * 3
Children and Young People Services	CYPS CAMHS CT	Child and Adolescent Mental Health Services Community Team North * 2
Children and Young People Services	CYPS CAMHS CT	Child and Adolescent Mental Health Services Community Team - South(Guildford)*2

Children and Young People Services	CYPS CAMHS CT	Child and Adolescent Mental Health Services Primary Mental Health Services - East
Children and Young People Services	CYPS CAMHS CT	Child and Adolescent Mental Health Services Primary Mental Health Services - North
Children and Young People Services	CYPS CAMHS CT	Child and Adolescent Mental Health Services Primary Mental Health Services-South
Children and Young People Services	CYPS CDS	Hope Epsom
Children and Young People Services	CYPS CDS	Hope Guildford
Children and Young People Services	CYPS EIIP	Early Intervention in Psychosis-East Surrey
Children and Young People Services	CYPS EIIP	Early Intervention in Psychosis-West Surrey/North East Hants
Children and Young People Services	CYPS LD	Children and Young People Learning Disability Services - East * 3
Children and Young People Services	CYPS LD	Children and Young People Learning Disability Services- North West
Children and Young People Services	CYPS LD	Children and Young People Learning Disability Services - South West
Children and Young People Services	CYPS SBS	Beeches - (Children and Young People LD Respite Service)
Children and Young People Services	CYPS Specialist Services	Child and Adolescent Mental Health Services Children in Care
Children and Young People Services	CYPS Specialist Services	Adult Eating Disorder Service * 3
Children and Young People Services	CYPS Specialist Services	Children and Young People Eating Disorder Service - Surrey wide
Children and Young People Services	CYPS Specialist Services	STARS
Learning Disabilities	LD FASD	Foetal Alcohol Spectrum Disorders Clinic
Learning Disabilities	LD Psychiatric Liaison	Liaison Service-PLD Acute General Hospital
Learning Disabilities	PLD AT and S	April Cottage
Learning Disabilities	PLD Care home	Ashmount
Learning Disabilities	PLD AT and S	Bramdean
Learning Disabilities	PLD Care home	Derby House
Learning Disabilities	PLD care home	Hillcroft
Learning Disabilities	PLD care home	Redstone House
Learning Disabilities	PLD care home	Rosewood
Learning Disabilities	PLD care home	Shieling

Learning Disabilities	PLD care home	Oakwood
Learning Disabilities	PLD care home	Larkfield
Learning Disabilities	PLD Daycare	Jasmine at Primrose
Learning Disabilities	PLD Daycare	Kingscroft
Learning Disabilities	PLD Daycare	Loddon Alliance
Learning Disabilities	PLD care home	Brook House
Learning Disabilities	PLD Daycare	Court Hill House
Learning Disabilities	PLD Daycare	My Time Chertsey
Learning Disabilities	PLD Daycare	My Time Epsom
Learning Disabilities	PLD Daycare	My Time Reigate
Learning Disabilities	PLD Daycare	Oasis Therapy Suite
Learning Disabilities	PLD CTPLD	Community Team for People with Learning Disability - East Surrey * 2
Learning Disabilities	PLD CTPLD	Community Team for People with Learning Disability-Mid Surrey
Learning Disabilities	PLD CTPLD	Community Team for People with Learning Disability-North West Surrey
Learning Disabilities	PLD CTPLD	Community Team for People with Learning Disability-South West Surrey
Learning Disabilities	PLD CTPLD	Liaison Service-PLD Acute General Hospital
Older People Mental Health	OP Acute A and T	Bluebell Ward (1 & 2)
Older People Mental Health	OP Acute A and T	Primrose Ward 1
Older People Mental Health	OP Acute A and T	Spenser Ward
Older People Mental Health	OP Acute A and T	Victoria Ward
Older People Mental Health	OP CMHT	Community Mental Health Team for Older People- Surrey Heath
Older People Mental Health	OP CMHT	Community Mental Health Team for Older People-East Surrey
Older People Mental Health	OP CMHT	Community Mental Health Team for Older People-Guildford
Older People Mental Health	OP CMHT	Community Mental Health Team for Older People-Mid Surrey 1
Older People Mental Health	OP CMHT	Community Mental Health Team for Older People-Mid Surrey 2
Older People Mental Health	OP CMHT	Community Mental Health Team for Older People-North East Hampshire
Older People Mental Health	OP CMHT	Community Mental Health Team for Older People-Runnymede and West Elmbridge
Older People Mental Health	OP CMHT	Community Mental Health Team for Older People-Spelthorne
Older People Mental Health	OP CMHT	Community Mental Health Team for Older People-Waverley

Older People Mental Health	OP CMHT	Community Mental Health Team for Older People-Woking
Older People Mental Health	OP ECT	ECT Department
Older People Mental Health	OP Psychiatric Liaison	Criminal Justice Liaison and Diversion Service
Older People Mental Health	OP Psychiatric Liaison	Liaison Service-East Surrey Hospital Psychiatric
Older People Mental Health	OP Psychiatric Liaison	Liaison Service-Epsom General Hospital
Older People Mental Health	OP Psychiatric Liaison	Liaison Service-Frimley Park Hospital Psychiatric
Older People Mental Health	OP Psychiatric Liaison	Liaison Service-Royal Surrey County Psychiatric
Older People Mental Health	OP Psychiatric Liaison	Liaison Service-St Peters Hospital Psychiatric
Social Service	Social Service	Enabling Independence Service-East (Epsom)
Social Service	Social Service	Enabling Independence Service-West (Guildford)
Specialist Services	SS Drug and Alcohol	Windmill House
Specialist Services	SS Drug and Alcohol	i-access East
Specialist Services	SS Drug and Alcohol	i-access North West
Specialist Services	SS Drug and Alcohol	i-access South West
Specialist Services	SS Drug and Alcohol	iHear (subcontractor)
Specialist Services	SS Drug and Alcohol	Pavilions (subcontractor)
Specialist Services	SS Forensic Services	Community Forensic